





# Monobloc

Domestic hot water heat pump

Efficiency › Energy savings › Comfort

Energy efficiency	
 <b>A<sup>+</sup></b>	 <b>A<sup>+</sup></b>
Model 200 L	Model 260 L



The combination of

# high performance, guaranteed comfort and ultimate energy savings



Available in the 200 litre or 260 litre model, our Monobloc domestic hot water heat pump is designed to provide your perfect climate.

## Designed to meet all of your needs



### Energy efficiency

Operating with COP values up to 3,6 for the 260l model it reaches the highest level of energy efficiency. Maximizing savings and minimizing electricity costs.



### Low maintenance

High quality materials and smart settings make sure low maintenance is needed. Practical placement of parts ensures easy maintenance.



### Solar ready

Take full advantage of the sun. Easily connect to a PV-system. Connect also to thermal solar with the 260l additional heat exchanger model.



### Amazingly silent

The new Monobloc DHW HP is with its silent operation one of the most quiet in the market with only 36 dB at 2 m distant

Low sound  
=  
36 dB(A)



# Future proof:

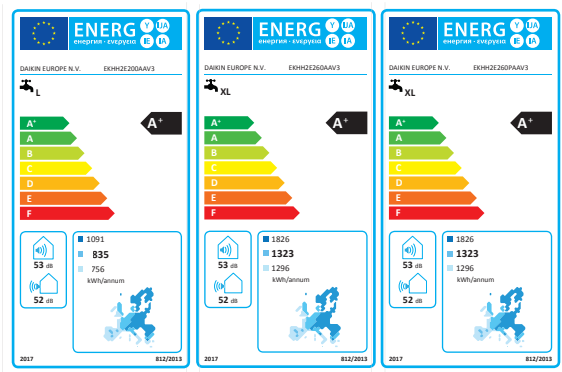
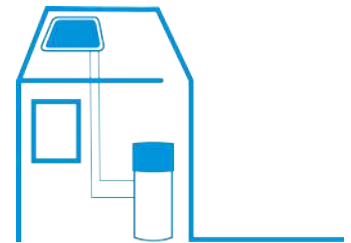
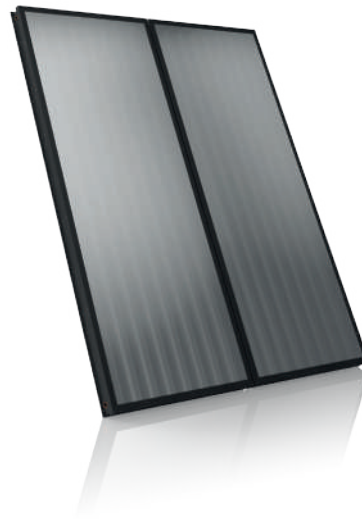
connect to thermal solar and PV for greater savings

Easily connect your Monobloc DHW HP to a PV system. When surplus PV electricity is available it can be directly supplied to the unit.

Our 260l Monobloc DHW HP is available with an additional heat exchanger for direct thermal solar application for maximum advantage of the sun.

## Thermal solar, a pressurized system:

- › Filled with water and antifreeze to prevent frozen pipes
- › Possibility to use curved piping to connect the tank to the solar collectors
- › Ideal for renovations and existing houses



## Class A+ efficiency labels

According to the EU eco-design guidelines, Daikin's Monobloc domestic hot water heat pump is classified with an "A+" label, the highest energy efficiency available.



### A smart product

Your Daikin domestic hot water heat pump is "Smart Grid Ready". It is designed to use computer technology to maximise the production, distribution and use of electricity. Your domestic hot water heat pump communicates with your "intelligent" electric meter and automatically determines the least expensive times for producing the energy required to meet your hot water needs.



# Increased energy efficiency and savings

**Our new Monobloc domestic hot water heat pump is the ideal combination of heat pump technology and a high performance hot water storage tank that increases energy efficiency and creates substantial savings.**

## Maximum efficiency

The Monobloc domestic hot water heat pump is optimally designed to maximize the efficiency of hot domestic water production:

- › Maximizing insulation
- › COP up to 3,6 possible (EN16147) with 15C outside air.
- › Provides prime performances from -7°C up to 38°C outside air without electrical heater support.

## Energy savings

The Monobloc domestic hot water heat pump creates substantial savings for the end user:

- › Reduces the electricity required to produce domestic hot water drastically..
- › Applicable for incentives
- › Can be optimized for off-hour peak production.



# Trouble-free installation and maintenance-free tank

The compact design of the Monobloc domestic hot water heat pump allows for easy installation and maintenance in all spaces.

## Easy installation

- › Pre-installed unit.
- › Easy maneuverable with the compact diameter of only 600 mm.
- › Easy connection on the top or side maximizing placing options.
- › Footprint of only 0,36m<sup>2</sup>.

## Dimensions

Required space  
= 0.36 m<sup>2</sup>

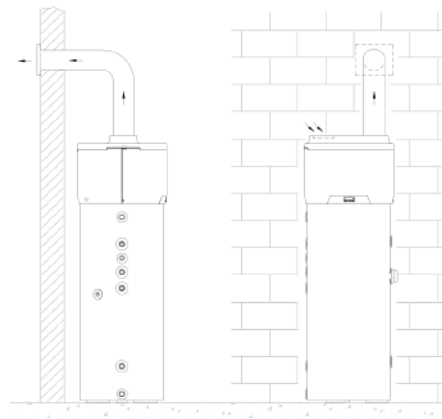
## Low maintenance

- › High quality finish ensures product durability.
- › Easy maintenance on the top and the side.
- › The unit informs customer when the air filter should be cleaned.
- › 1 (200 L) or 2 (260 L) replaceable anodes for even better protection against corrosion improving the lifetime of the unit.

## Easy control

- › 3 easy operating modes, Eco - Auto - Boost for your personal preferences.
- › Automatic defrost cycle.
- › Protective cycle against bacterial formation, no **legionella**.

## Connection top of the unit



## What is legionella?

Legionella is a dangerous water bacteria that colonises at high temperatures in large volumes of standing water. There are approximately 35 types of legionella and of those, at least 17 are pathogenic. The most common consequences are Pontiac fever and Legionnaire's disease.

## Operating modes

**ECO** - Only renewable energy will be used without activating the electrical heating element. This way you save extra on your energy bill and fully protect mother nature with this CO<sub>2</sub> - neutral stand.

**AUTO** - Renewables will be supported with an electrical heater element. In this mode optimum comfort is always guaranteed with minimal impact on the environment.

**BOOST** - In the Boost mode you are able to heat your domestic hot water in incredible fast timing. This mode can manually be enabled to increase output to maximum by utilizing both heat pump and the additional heating element.

# The Daikin range at your disposal

Connect your new Daikin Monobloc domestic hot water heat pump with your existing Daikin installation to further increase your savings and decrease your carbon footprint. The heat pump can be retrofitted with several compliant Daikin products.

## Ideal for new build:

- › Build your home green. Use the thermal power available in the air.
- › Incentives and high efficiencies create fast pay-back times.
- › Rotex Solar offer (EKSH21P/EKSV26P)
- › New gas condensing boiler (D2TND012A4A)
- › Multi-split R-32 Ururu-Sarara offer (RXZ-N)

## Ideal for renovation:

- › Easily connectable to an existing system.
- › Credit tax incentive up to 30%.
- › 1- or 2-pipe system available
- › Rotex Solar offer (EKSH21P/EKSV26P)
- › New gas condensing boiler (D2TND012A4A)

With the option of mechanical ventilation it is possible depending on the season to heat or cool your living space in addition to domestic hot water creation.

## How does it work?

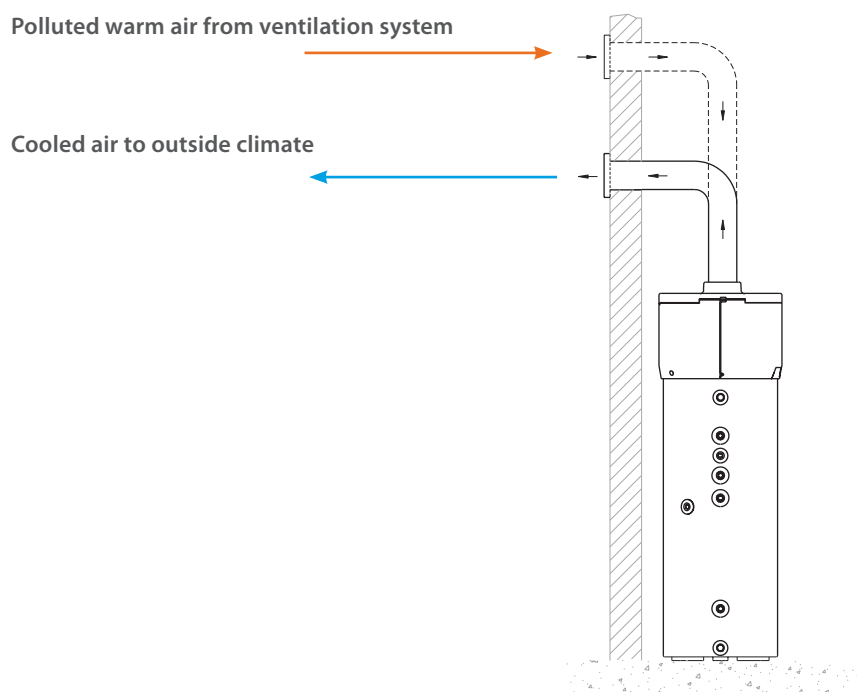
- › Your indoor polluted air is extracted by the ventilation system
- › The air is transported to your heat pump and heat is extracted from the polluted air
- › The cooled air is exited through an exhaust pipe

## Where this function can be used?

- › Apartment building
- › One or more family houses.

## Where can I use it?

- › You can use this function in your family house or in a collective system such as an apartments building



# Daikin, always a good investment

**Our new Monobloc domestic hot water heat pump delivers high performances at a low cost. Decrease your global footprint but do not decrease your comfort.**

## Save more, pay less principle:

- › When renovating you can take advantage of generous incentives seriously lowering the purchase cost.
- › Lower electricity bill through heat pump technology.
- › Fast pay-back time.
- › Smart grid connection to ensure lowest electricity prices.

## Your comfort is elevated to higher grounds with:

- › A domestic hot water tank capacity up to 260L.
- › Boost mode to heat your boiler incredibly fast when you need it.
- › Additional heating element.
- › L or XL tapping profile.

## Easy and versatile installation:

- › Choice between outside air in 2-pipe system or indoor air in a 1-pipe system.





# Monobloc domestic hot water heat pump

## Enhanced hot water comfort

- › Quiet operation: with 53 dBA, one of the most silent products in its kind
- › Easy handling: thanks to its compact size, it can easily pass through the doorway
- › Enhanced comfort: the 3 operating modes will give an answer to all your needs
- › Solar connectivity: empower your house with renewable energy
- › Wide operation range: down to  $-7^{\circ}\text{C}$  outside temperature with the heat pump, below  $-7^{\circ}\text{C}$  electrical heating element support



EKHH2E-AV3

Indoor unit		EKHH2E/EKHH2E		2E200AV3		2E260AV3		2E260PAV3	
COP				3.00(1) / 3.30(2)				3.10(1) / 3.60(2)	
Heat pump	Casing	Colour	White body / grey top						
		Material	Cover: EPP top finishing						
	Operation range	Ambient	Min.	$^{\circ}\text{CDB}$	$-7$				
			Max.	$^{\circ}\text{CDB}$	38				
	Power supply	Phase	1P						
Frequency		Hz 50							
Voltage		V 230							
Tank	Casing	Colour	White						
		Material	Embossed ABS						
	Dimensions	Unit	Height	mm 1,210		1,500			
			Water side	Min.	$^{\circ}\text{C}$	10			
	Operation range	Max.	$^{\circ}\text{C}$	56					
			Standing heat loss	W	60	70	71		
	Power supply	Phase	1P						
Frequency		Hz 50							
Voltage		V 230							

(1) Temperature of incoming air supply =  $7^{\circ}\text{C}$ , temperature of boiler storage environment =  $20^{\circ}\text{C}$ , water heated from  $10^{\circ}\text{C}$  to  $55^{\circ}\text{C}$  (according to UNI EN 16147-2011).

(2) Temperature of incoming air supply =  $15^{\circ}\text{C}$ , temperature of boiler storage environment =  $20^{\circ}\text{C}$ , water heated from  $10^{\circ}\text{C}$  to  $55^{\circ}\text{C}$  (according to UNI EN 16147-2011).

## Connection with other Daikin products:

### Renovations and new builds

### New builds

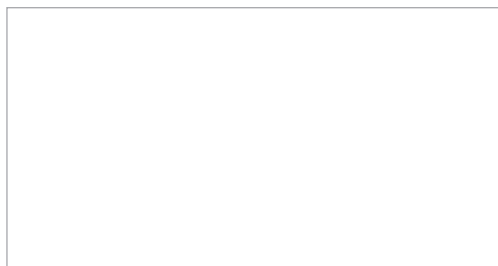


D2TND012A4A (12 kW)

EKSH21P/EKSV26P

RXZ-N (R-32 Multi-split "Ururu Sarara")

Daikin Europe N.V. Naamloze Vennootschap Zandvoordestraat 300 · 8400 Oostende · Belgium · [www.daikin.eu](http://www.daikin.eu) · BE 0412 120 336 · RPR Oostende (Responsible Editor)



ECPEN17-828

10/17



Daikin Europe N.V. participates in the Eurovent Certified Performance programme for Liquid Chilling Packages and Hydronic Heat Pumps, Fan Coil Units and Variable Refrigerant Flow systems. Check ongoing validity of certificate: [www.eurovent-certification.com](http://www.eurovent-certification.com)

The present publication is drawn up by way of information only and does not constitute an offer binding upon Daikin Europe N.V. Daikin Europe N.V. has compiled the content of this publication to the best of its knowledge. No express or implied warranty is given for the completeness, accuracy, reliability or fitness for particular purpose of its content and the products and services presented therein. Specifications are subject to change without prior notice. Daikin Europe N.V. explicitly rejects any liability for any direct or indirect damage, in the broadest sense, arising from or related to the use and/or interpretation of this publication. All content is copyrighted by Daikin Europe N.V.

The present publication supersedes ECPEN15-002. Printed on non-chlorinated paper.